

**For Sale**  
**Development Opportunity**

20-24 Farley Place,  
Block 1801, Lot 18 & 19  
**Short Hills, New Jersey**

Bill Hettler  
**732.738.8888**  
[bill@logisticrealty.com](mailto:bill@logisticrealty.com)

± 9,000 Sq. Ft. Total Lot Size  
Two (2) Lots ± 4,500 Sq. Ft. (45 x 100) ALREADY SUBDIVIDED  
Can Be Sold Together or Separate  
Up To ± 6,250 Sq. Ft. Developable As of Right

**Zoning: Retail (w/Food), Office, and Second Story Residential  
Next to Walgreens**



**Offering Summary:** Rare Lot Sale in Short Hills with 07078 Mailing Address.  
Opportunity to Develop Retail & Office with Second Floor Residential Permitted.  
Up to ± 6,250 Sq. Ft Can Be Developed As of Right.  
2018 Taxes: ± \$9,510.00

**\$985,000.00 Together**

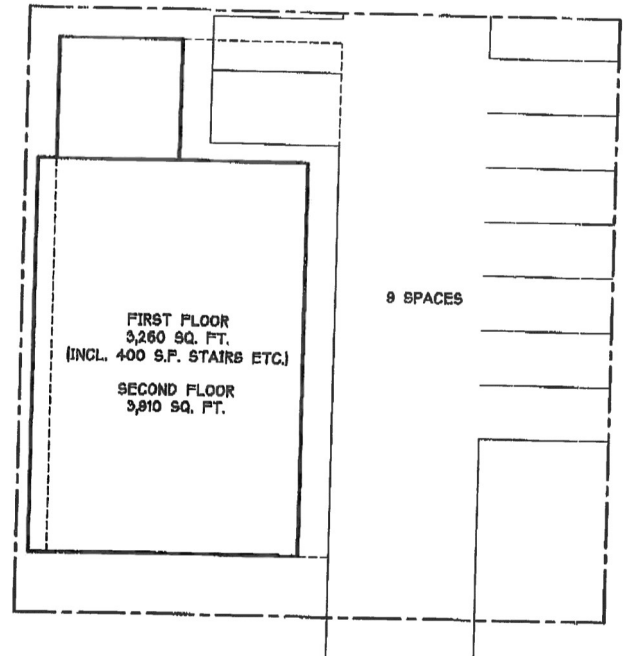
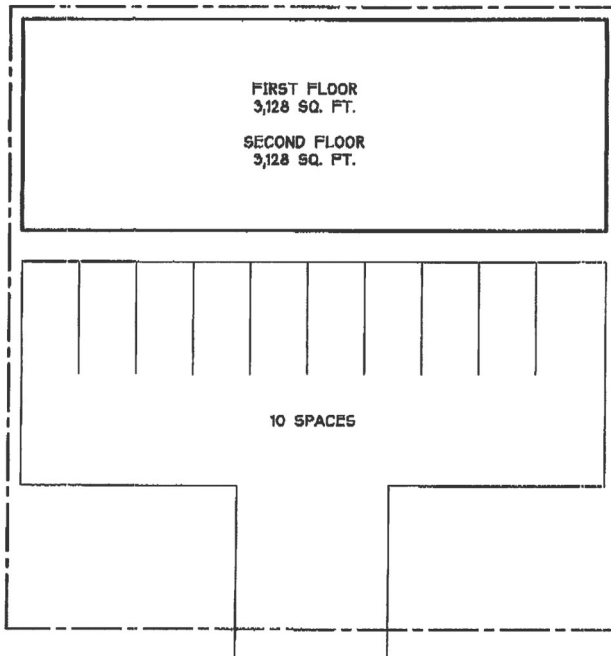
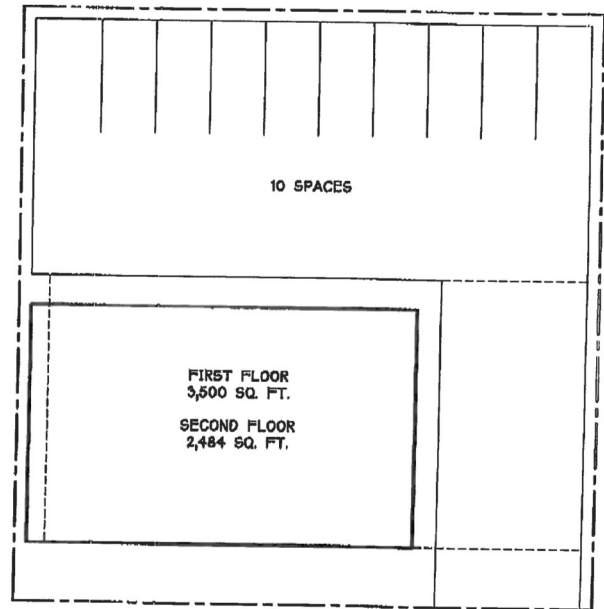
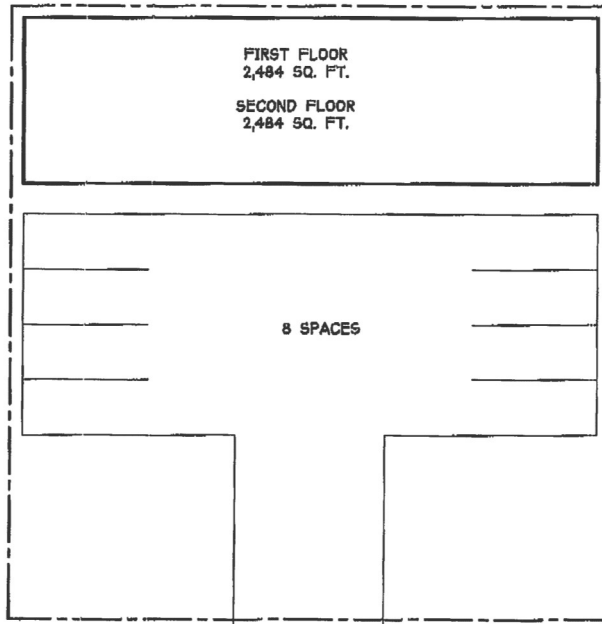
**For Sale**  
**Development Opportunity**

20-24 Farley Place,  
Block 1801, Lot 18 & 19  
**Short Hills, New Jersey**

Bill Hettler  
**732.738.8888**  
[bill@logisticrealty.com](mailto:bill@logisticrealty.com)

± 9,000 Sq. Ft. Total Lot Size  
Two (2) Lots ± 4,500 Sq. Ft. (45 x 100) ALREADY SUBDIVIDED  
Can Be Sold Together or Separate  
Up To ± 6,250 Sq. Ft. Developable As of Right

**Zoning: Retail (w/Food), Office, and Second Story Residential**





**For Sale**  
**Development Opportunity**  
20-24 Farley Place,  
Block 1801, Lot 18 & 19  
**Short Hills, New Jersey**



**LOGISTIC REALTY**  
COMMERCIAL REAL ESTATE SERVICES

Bill Hettler  
**732.738.8888**  
[bill@logisticrealty.com](mailto:bill@logisticrealty.com)