

**For Lease**  
700 Castle Road  
Secaucus, New Jersey  
±23,000 Sq. Ft. Industrial



**SPECIFICATIONS**

<b>Address:</b>	700 Castle Road Secaucus, New Jersey
<b>Available Sq. Ft.:</b>	23,000 Sq. Ft.
<b>Office Area:</b>	Built to Suit
<b>Retail Outlet:</b>	Possible
<b>Year Built:</b>	1988
<b>Ceiling Height:</b>	25' Clear
<b>Loading:</b>	3 Tailboard Docks
<b>Column Spacing:</b>	40' x 40' Columns
<b>Sprinkler:</b>	Wet
<b>Rail:</b>	Available
<b>Power:</b>	800 Amps, 3 Phase
<b>Utilities:</b>	Gas Heat, City Water & Sewer
<b>Miscellaneous:</b>	Currently Fully Racked Steel Fence Division In Place Gross Heat/Electric- No Separate Meters
<b>Tax/CAM/Utilities:</b>	\$3.50/SF Estimated- Tenant to Pay Proportionate Share Based on Pro Rata Square Footage
<b>Lease Rate:</b>	\$6.25/SF NNN



**LOGISTIC REALTY**  
**INDUSTRIAL REAL ESTATE SERVICES**

Bill Hettler  
**732.738.8888 office**  
[wjhettler@logisticrealty.com](mailto:wjhettler@logisticrealty.com)



**For Lease**  
700 Castle Road  
Secaucus, New Jersey  
±23,000 Sq. Ft. Industrial



**LOGISTIC REALTY**  
INDUSTRIAL REAL ESTATE SERVICES

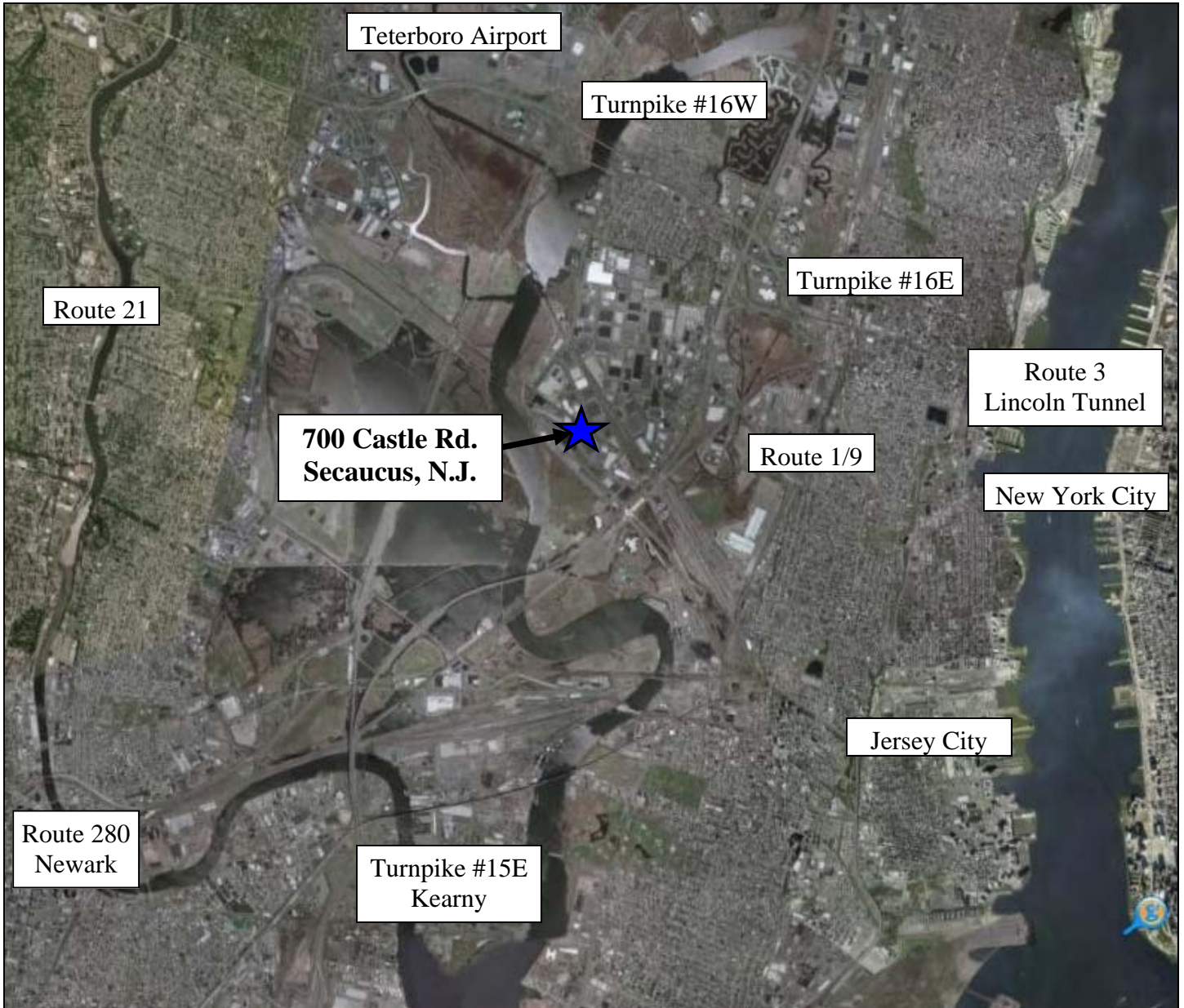
Bill Hettler  
732.738.8888 office  
[wjhettler@logisticrealty.com](mailto:wjhettler@logisticrealty.com)



## For Lease

700 Castle Road  
Secaucus, New Jersey  
±23,000 Sq. Ft. Industrial

## Local Area Map



**LOGISTIC REALTY**  
INDUSTRIAL REAL ESTATE SERVICES

Bill Hettler  
732.738.8888 office  
[wjhettler@logisticrealty.com](mailto:wjhettler@logisticrealty.com)



# Regional Map

700 Castle Rd.  
Secaucus, N.J.



The information above has been obtained from reliable sources. While believed to be accurate, it has not been verified and therefore no guarantee, warranty or representation to its accuracy can be made. It is your responsibility to confirm its accuracy and completeness. Logistic Realty, LLC.- Licensed Real Estate Broker