

## For Lease

±5,000 Sq. Ft. Industrial/Office  
12 Connerty Ct., East Brunswick, N.J.



### SPECIFICATIONS

<b>Address:</b>	12 Connerty Ct., East Brunswick, New Jersey
<b>Total Square Feet:</b>	±5,000 Sq. Ft.
<b>Warehouse Area:</b>	± 3,000 Sq. Ft.
<b>Office Area:</b>	± 2,000 Sq. Ft.
<b>Loading:</b>	1 Loading Docks 1 "UPS" Dock Drive In Loading Possible
<b>Ceiling:</b>	18' Clear
<b>Column Spacing:</b>	Clear Span
<b>Sprinkler:</b>	Wet System
<b>Power:</b>	-
<b>Utilities:</b>	Gas Heat, City Water & Sewer
<b>Tax/CAM:</b>	\$-
<b>Lease Rate:</b>	\$5.95/Sq. Ft. NNN

**LOGISTIC REALTY**  
INDUSTRIAL REAL ESTATE SERVICES

Nick Santangelo  
908.947.8398 cell  
[nick@logisticrealty.com](mailto:nick@logisticrealty.com)

## For Lease

±5,000 Sq. Ft. Industrial/Office  
12 Connerty Ct., East Brunswick, N.J.

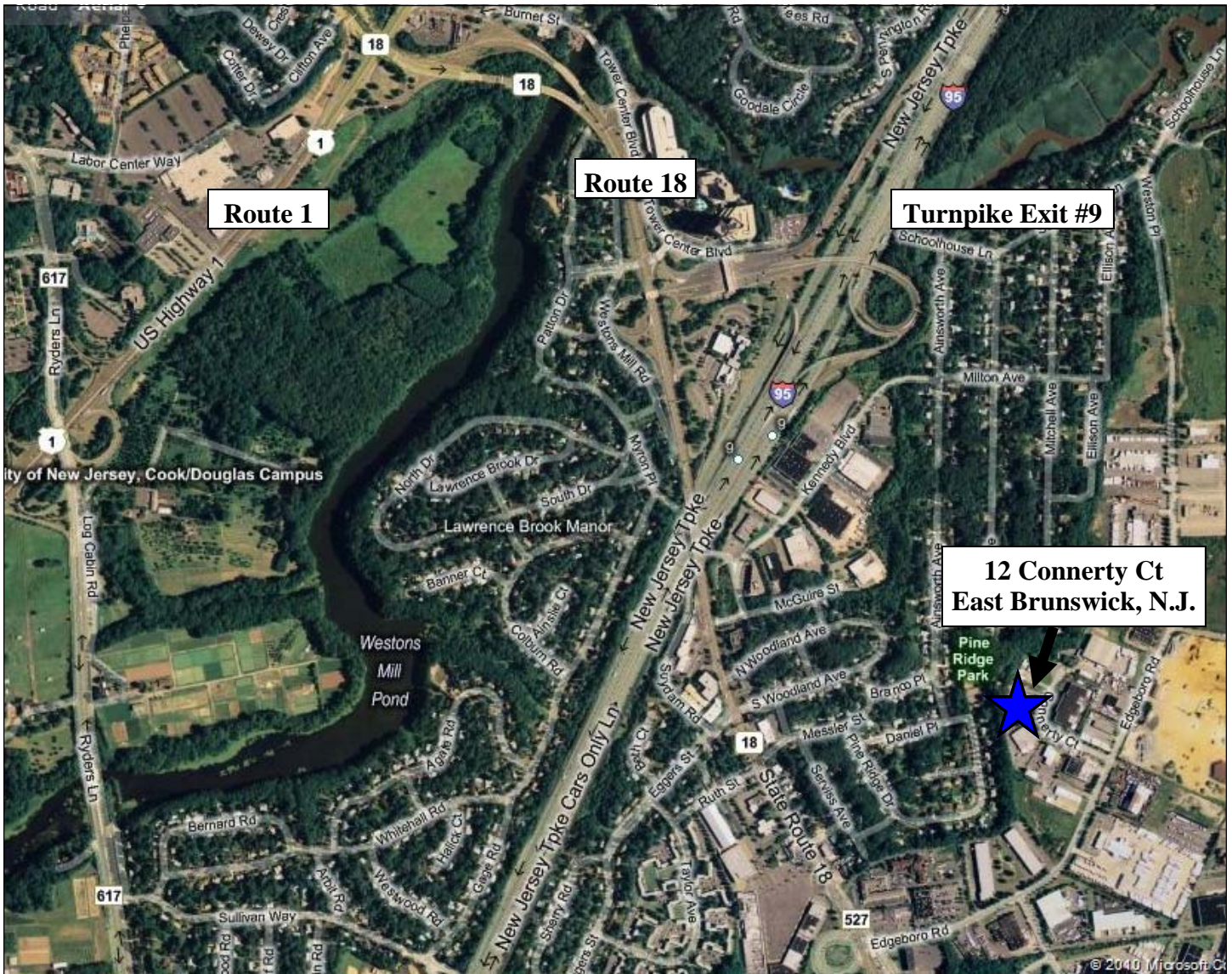


**LOGISTIC REALTY**  
INDUSTRIAL REAL ESTATE SERVICES

Nick Santangelo  
908.947.8398 cell  
[nick@logisticrealty.com](mailto:nick@logisticrealty.com)

# For Lease

±5,000 Sq. Ft. Industrial/Office  
12 Connerty Ct., East Brunswick, N.J.

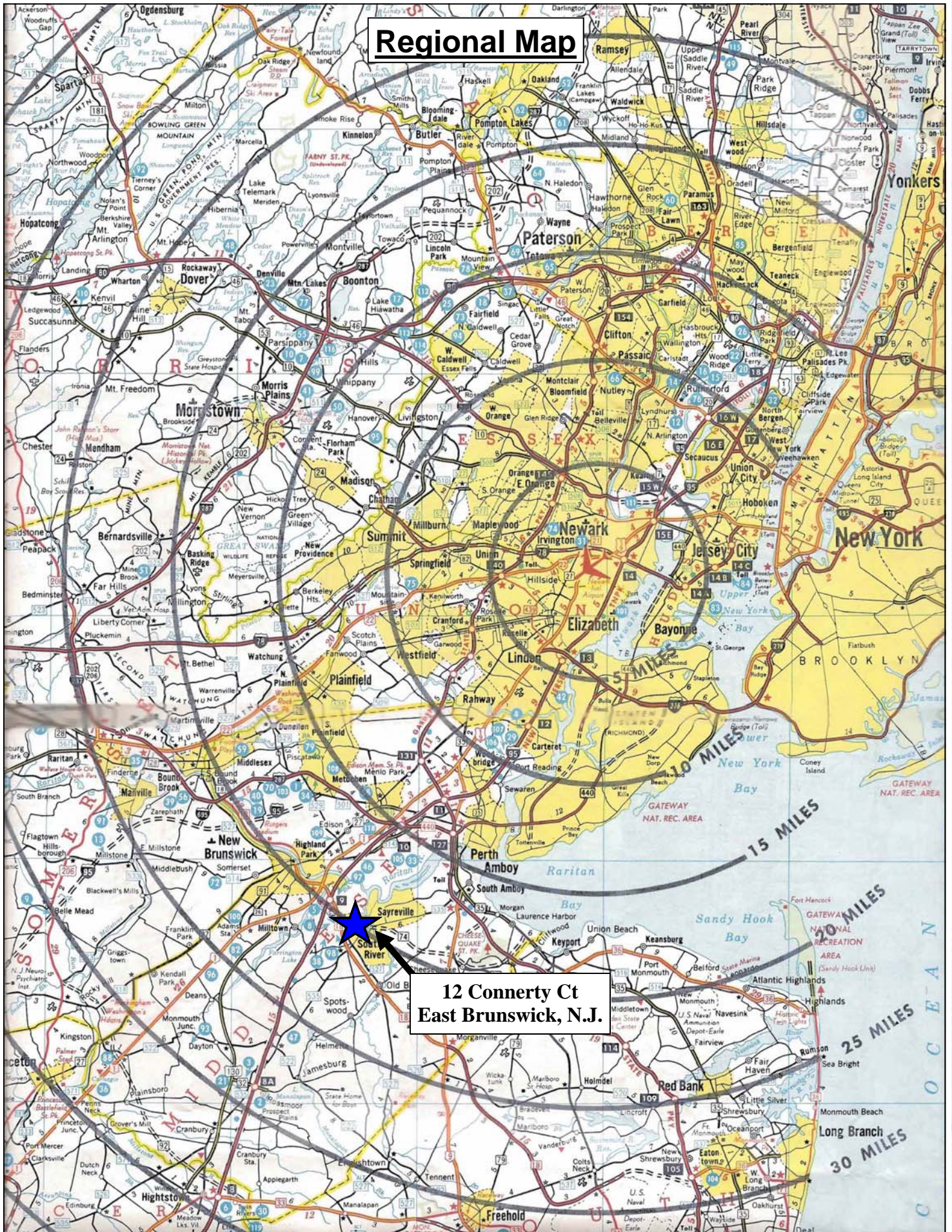


- Directly Off Route 18 / Edgeboro Road.
- Minutes to Junction of NJ Turnpike Exit #9 & Rt. 18
  - Minutes to Junction of Rt. 18 & Rt. 1

**LOGISTIC REALTY**  
INDUSTRIAL REAL ESTATE SERVICES

Nick Santangelo  
908.947.8398 cell  
[nick@logisticrealty.com](mailto:nick@logisticrealty.com)

# Regional Map



12 Connerty Ct  
East Brunswick, N.J.